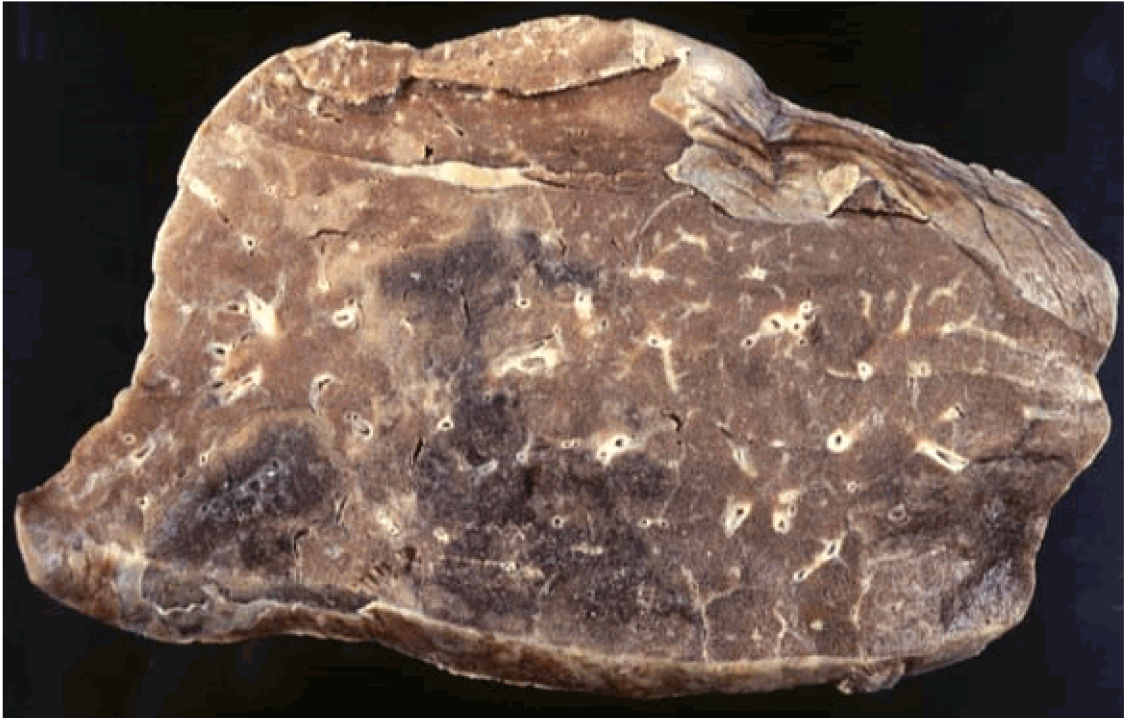


OSPE PAPER PATHOLOGY 20 DECEMBER 2008

UNOBSERVED STATIONS:

Station no 1



1. Identify.
2. give its various types.

Station no2



- Q1. What is this?
- Q2. What is its treatment?
- Q3. What are its other types?

Station 3



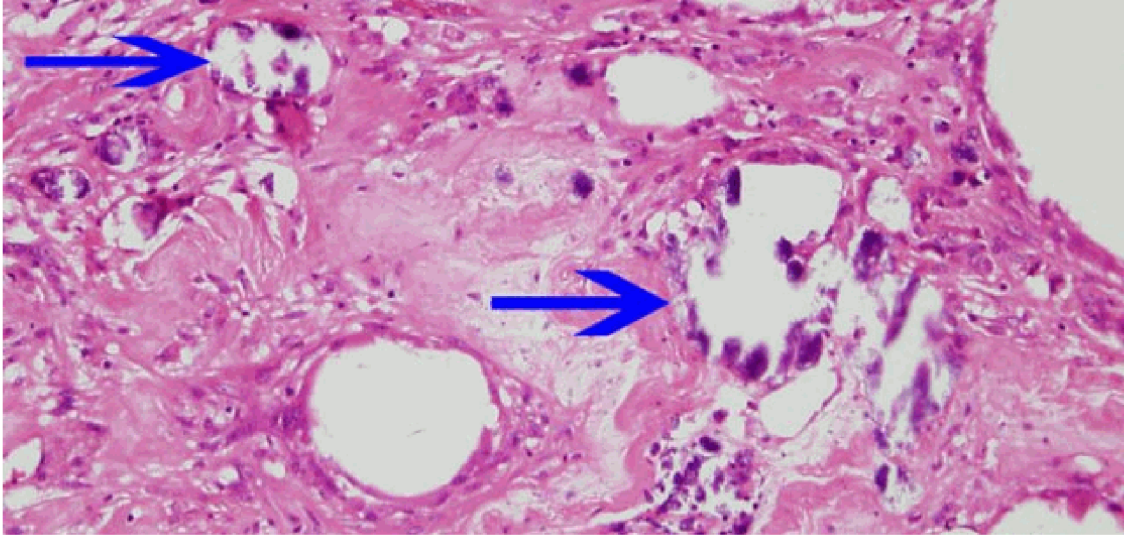
A boy indulges in the activity of weight lifting. Soon he develops a picture as shown

Q1. what is the cell adaptation?

Q2. Name other types of adaptations.

Q3. Name the organ which after partial resection grows completely?

Station 4.



A woman was diagnosed as suffering from secondary parathyroidism. She also went under hemodialysis.

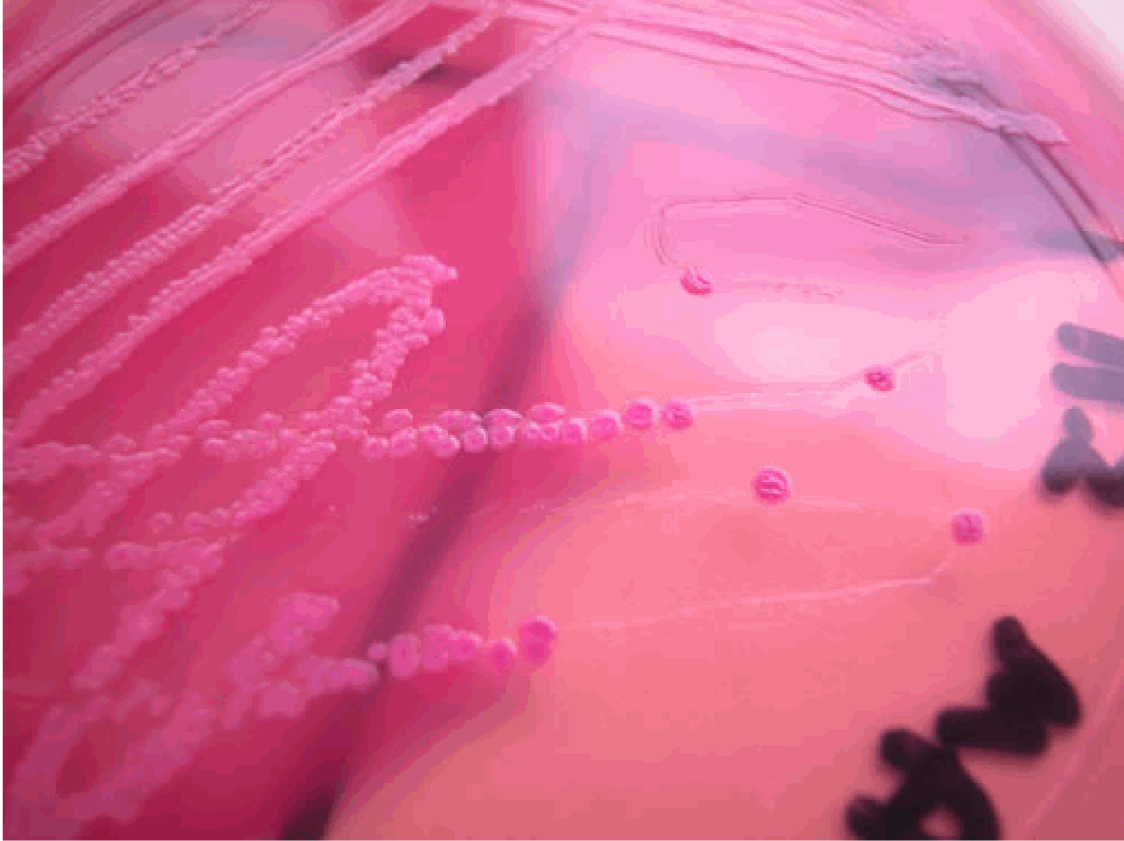
1. Identify this micrograph.
2. in what condition does it accumulate.

Station 5



1. Identify the bottles.
2. Identify the culture media.
3. What bacteria are cultured in it.
4. How much of it is required to grow bacteria in it.

Station 6



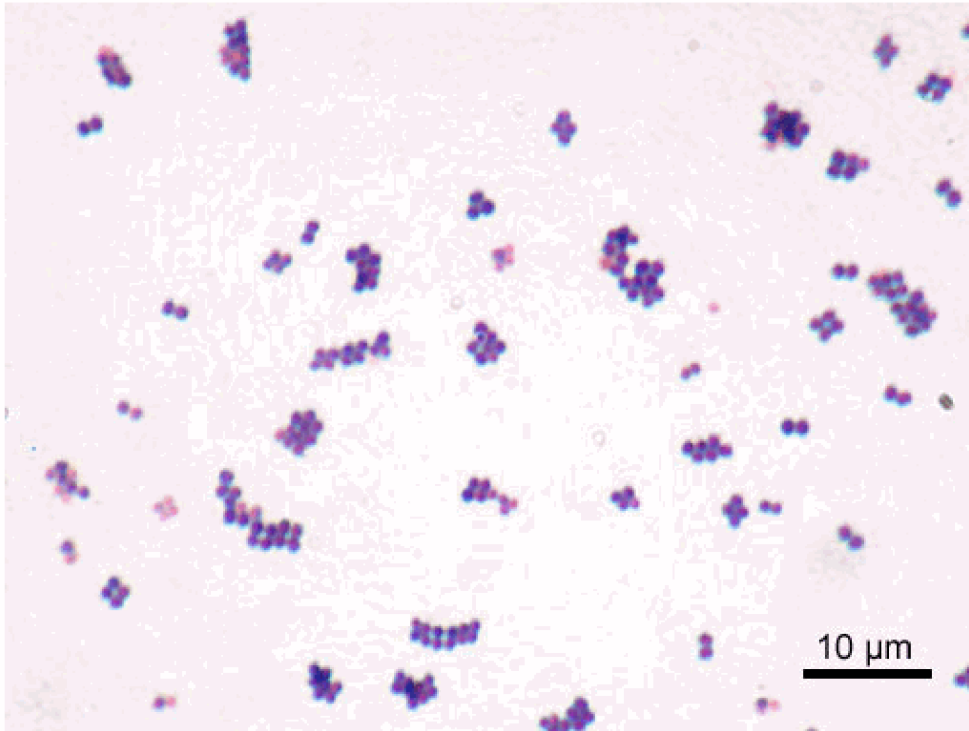
1. Identify.
2. which bacteria produce pink colonies in it.
3. name the sugar present in it.
4. which bacteria produce white colonies in it.

Station 7



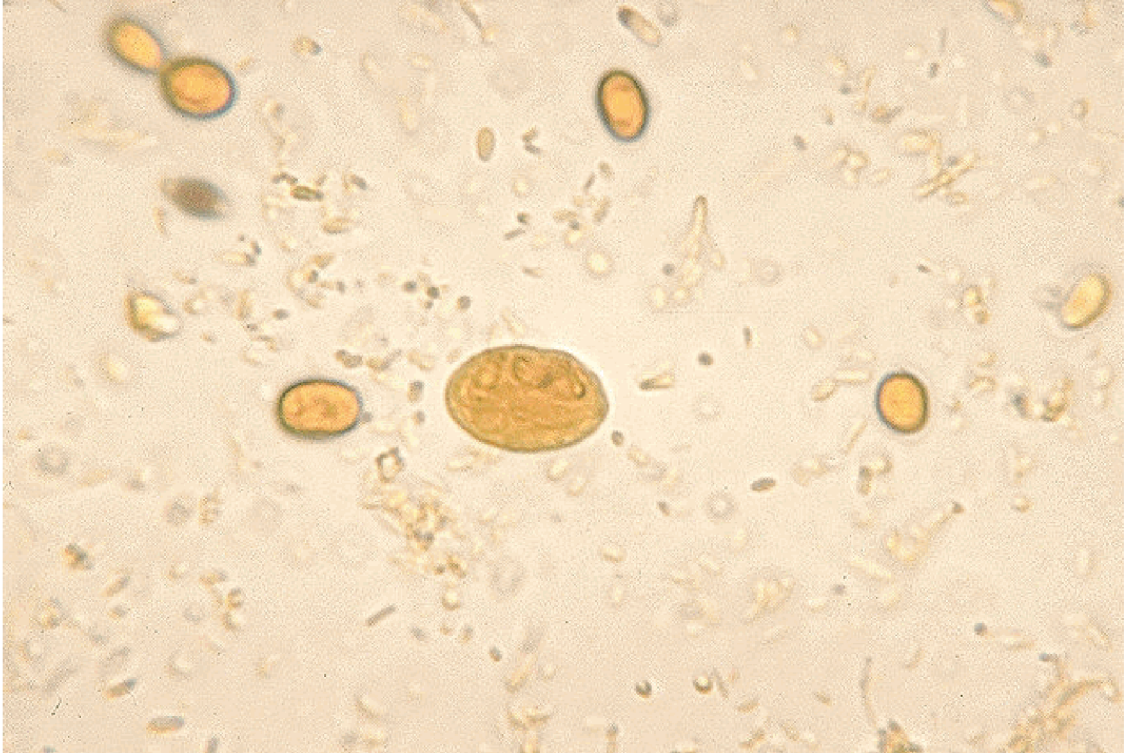
1. Name the reactions which can occur in it.

Station 8



1. describe the slide.
2. name the bacteria produced grown in clusters.
3. which type grows golden colonies.

Station 9



A child developed epigastric pain and diahorrea. His feacal specimen revealed the following picture.

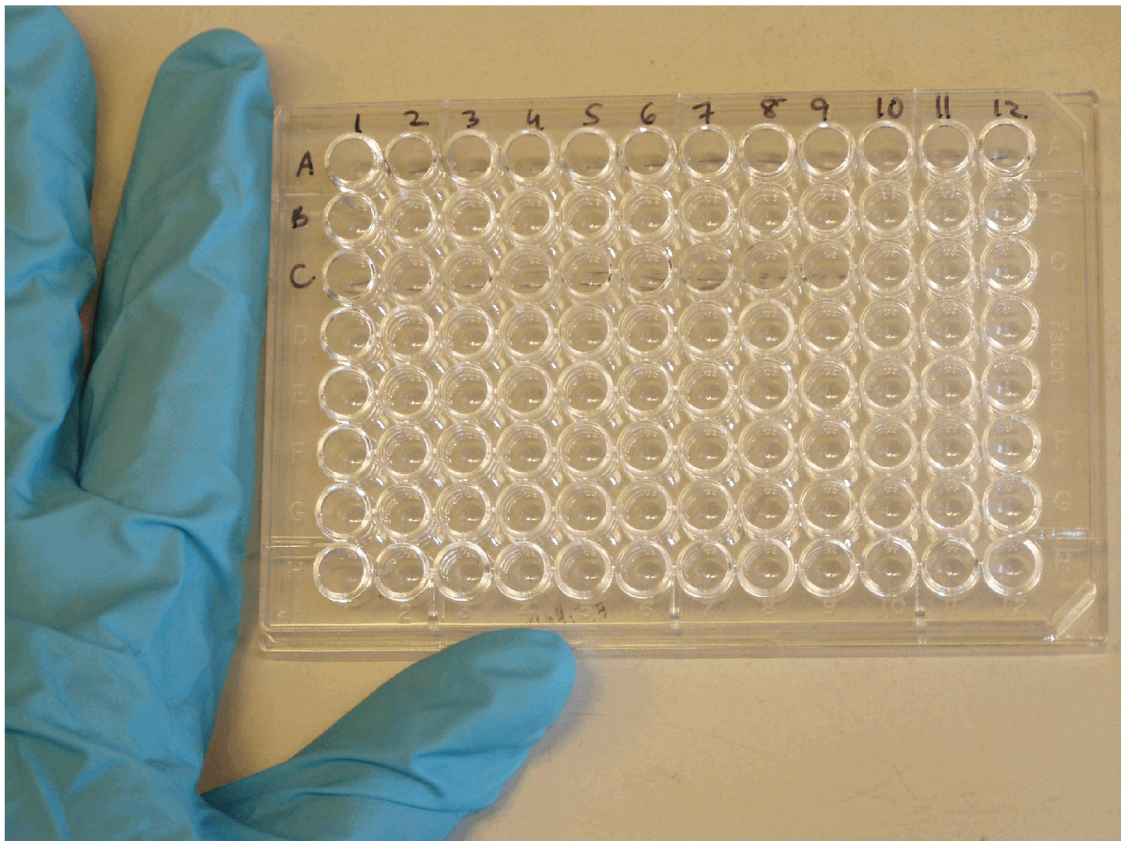
1. Identify.
2. what is the form of the organism present in it.
3. what is its other form.

Station 10



1. Identify.
2. What is it used for.
3. what precautions we must take in order to use it.

Station 11

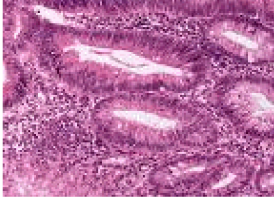


Identify the following pictures.
Give uses of both.

Station 12

Name the opportunistic fungi.

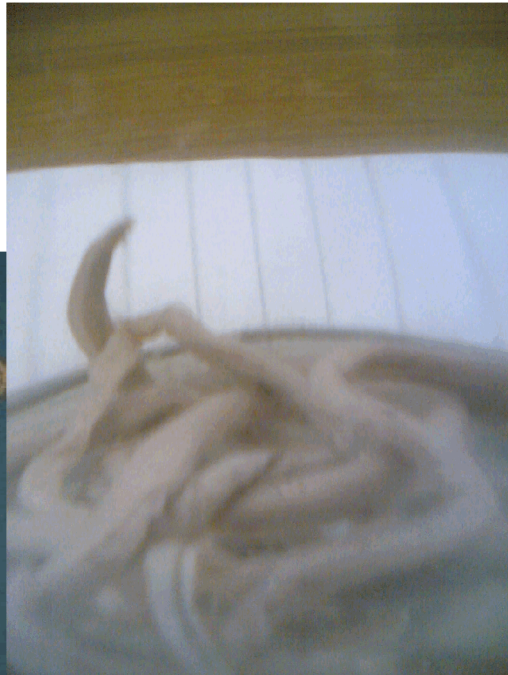
Station 13



Identify the type of malignancy.

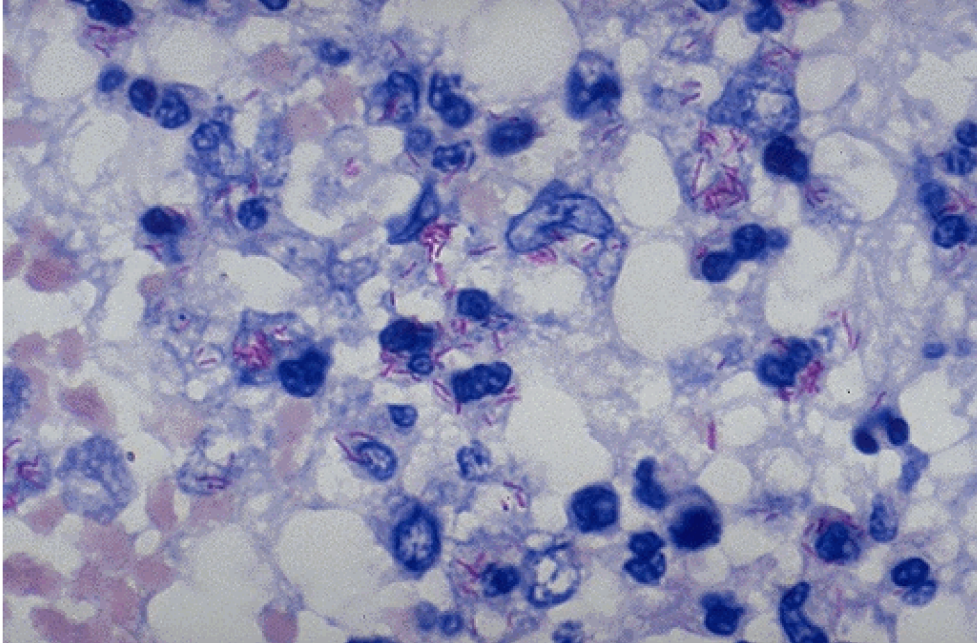
Name other kinds of malignant tumours.

Station 14



1. identify the helminthes.
2. what is its route of infection.
3. what are its complications.

Station 15



1. Identify.
2. what culture is used to grow these.
3. How much time it takes for colonies to grow.